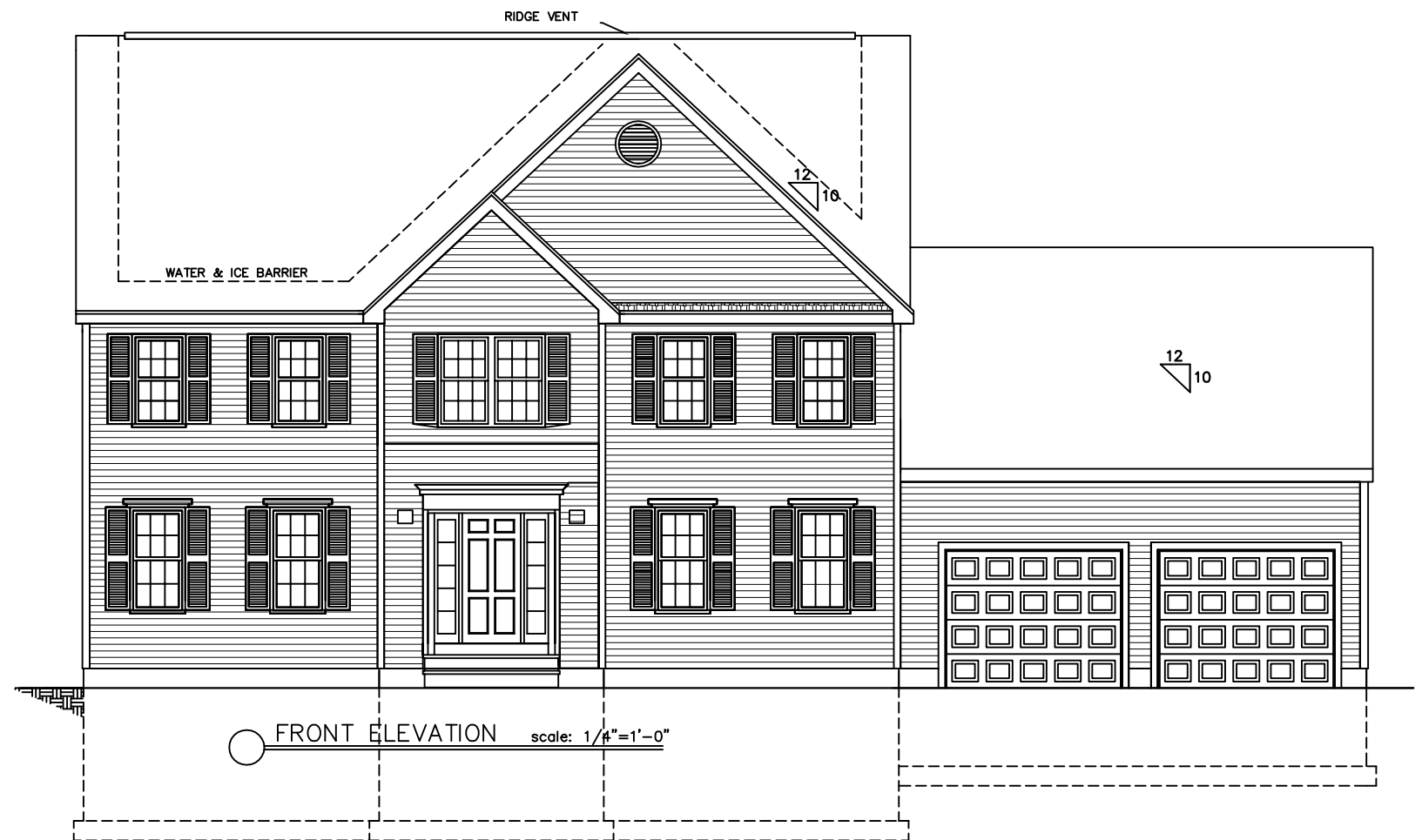
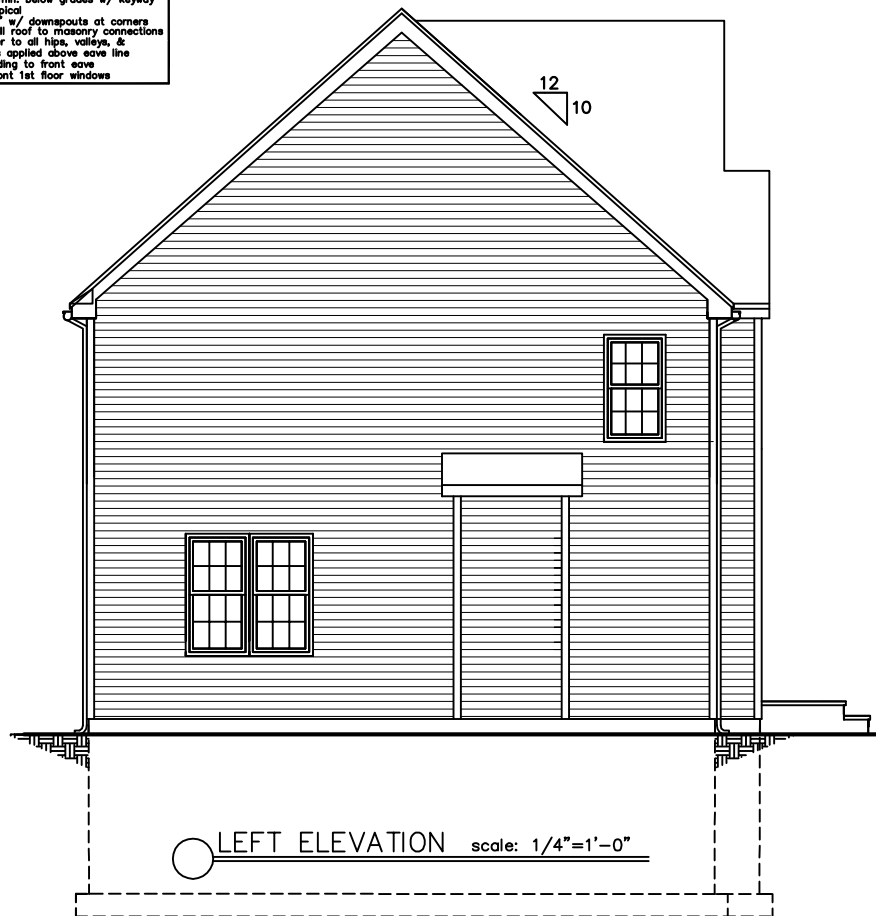
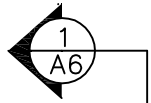


- TYPICAL EXTERIOR NOTES**
- Vinyl siding DBL. 4" panels
 - 4" vinyl corner bds.
 - Roofing shingles to be 3 tab 20 year min. equivalent to 15¢ felt below all shingles
 - Flashing to all roof to siding connections
 - Ridge vents cont. as shown
 - 1x6 Fascia w/ col stock to cover
 - 5" perforated soffit cont.
 - grades will vary
 - Fig. to be 4'-0" min. below grades w/ keyway
 - Alum. raises 6" typical
 - Alum. gutter 4"x6" w/ downspouts at corners
 - Lead flashing to all roof to masonry connections
 - Water & ice barrier to all hips, valleys, & eaves -2 courses applied above eave line
 - Prefab. dintel molding to front eave
 - Pediments over front 1st floor windows





FIRST FLOOR FRAMING

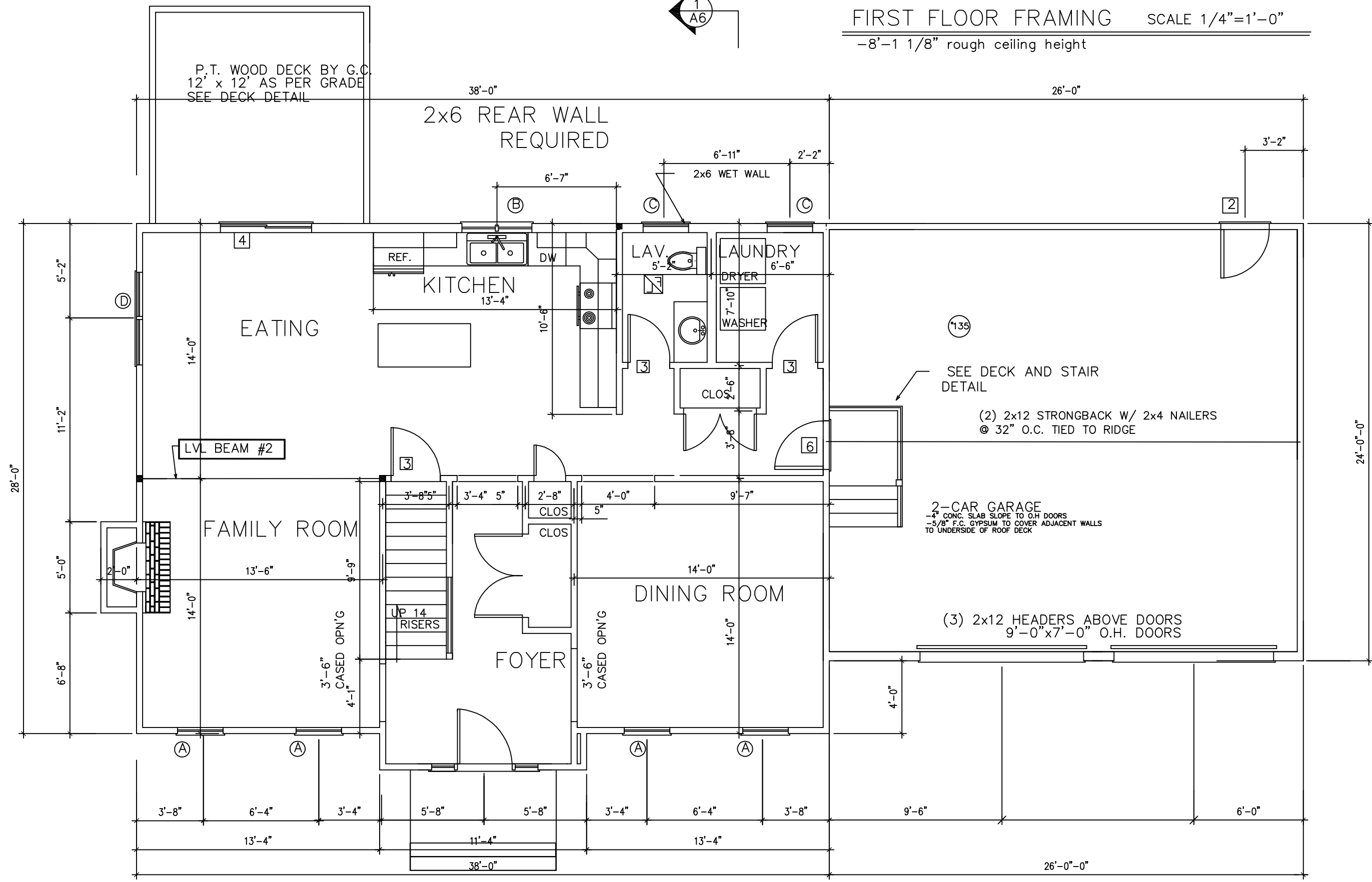
SCALE 1/4"=1'-0"

-8'-1 1/8" rough ceiling height

P.T. WOOD DECK BY G.C.
12' x 12' AS PER GRADE
SEE DECK DETAIL

38'-0"
2x6 REAR WALL
REQUIRED

26'-0"



EATING

KITCHEN

LAV

LAUNDRY

FAMILY ROOM

FOYER

DINING ROOM

2-CAR GARAGE
-4" CONC. SLAB SLOPE TO O.H. DOORS
-5/8" F.C. GYPSUM TO COVER ADJACENT WALLS
TO UNDERSIDE OF ROOF DECK

SEE DECK AND STAIR
DETAIL

(2) 2x12 STRONGBACK W/ 2x4 NAILERS
@ 32" O.C. TIED TO RIDGE

(3) 2x12 HEADERS ABOVE DOORS
9'-0" x 7'-0" O.H. DOORS

LVL BEAM #2

UP 14
RISERS

CLOS

CLOS

CLOS

CLOS

CASED OPN'G

CASED OPN'G

4'-1"

3'-6"

CASED OPN'G

3'-6"

REF.

DW

DRYER

WASHER

CLOS

3'-8"

2'-6"

3'-8"

3'-8"

3'-8"

3'-8"

3'-8"

3'-8"

3'-8"

3'-8"

3'-8"

3'-8"

3'-8"

3'-8"

3'-8"

3'-8"

3'-8"

3'-8"

3'-8"

3'-8"

3'-8"

3'-8"

3'-8"

3'-8"

3'-8"

3'-8"

3'-8"

3'-8"

3'-8"

3'-8"

3'-8"

3'-8"

3'-8"

3'-8"

3'-8"

3'-8"

3'-8"

3'-8"

3'-8"

3'-8"

3'-8"

3'-8"

3'-8"

3'-8"

3'-8"

3'-8"

3'-8"

3'-8"

3'-8"

3'-8"

3'-8"

3'-8"

3'-8"

3'-8"

3'-8"

3'-8"

3'-8"

3'-8"

3'-8"

3'-8"

3'-8"

3'-8"

3'-8"

3'-8"

3'-8"

3'-8"

3'-8"

3'-8"

3'-8"

3'-8"

3'-8"

3'-8"

3'-8"

3'-8"

3'-8"

3'-8"

3'-8"

3'-8"

3'-8"

3'-8"

3'-8"

3'-8"

3'-8"

3'-8"

3'-8"

3'-8"

3'-8"

3'-8"

3'-8"

3'-8"

3'-8"

3'-8"

3'-8"

3'-8"

3'-8"

3'-8"

3'-8"

3'-8"

3'-8"

3'-8"

3'-8"

3'-8"

3'-8"

3'-8"

3'-8"

3'-8"

3'-8"

3'-8"

3'-8"

3'-8"

3'-8"

3'-8"

3'-8"

3'-8"

3'-8"

3'-8"

3'-8"

3'-8"

3'-8"

3'-8"

3'-8"

3'-8"

3'-8"

3'-8"

3'-8"

3'-8"

3'-8"

3'-8"

3'-8"

3'-8"

3'-8"

3'-8"

3'-8"

3'-8"

3'-8"

3'-8"

3'-8"

3'-8"

3'-8"

3'-8"

3'-8"

3'-8"

3'-8"

3'-8"

3'-8"

3'-8"

3'-8"

3'-8"

3'-8"

3'-8"

3'-8"

3'-8"

3'-8"

3'-8"

3'-8"

3'-8"

3'-8"

3'-8"

3'-8"

3'-8"

3'-8"

3'-8"

3'-8"

3'-8"

3'-8"

3'-8"

3'-8"

3'-8"

3'-8"

3'-8"

3'-8"

3'-8"

3'-8"

3'-8"

3'-8"

3'-8"

3'-8"

3'-8"

3'-8"

3'-8"

3'-8"

3'-8"

3'-8"

3'-8"

3'-8"

3'-8"

3'-8"

3'-8"

3'-8"

3'-8"

3'-8"

3'-8"

3'-8"

3'-8"

3'-8"

3'-8"

3'-8"

3'-8"

3'-8"

3'-8"

3'-8"

3'-8"

3'-8"

3'-8"

3'-8"

3'-8"

3'-8"

3'-8"

3'-8"

3'-8"

3'-8"

3'-8"

3'-8"

3'-8"

3'-8"

3'-8"

3'-8"

3'-8"

3'-8"

3'-8"

3'-8"

3'-8"

3'-8"

3'-8"

3'-8"

3'-8"

3'-8"

3'-8"

3'-8"

3'-8"

3'-8"

3'-8"

3'-8"

3'-8"

3'-8"

3'-8"

3'-8"

3'-8"

3'-8"

3'-8"

3'-8"

3'-8"

3'-8"

3'-8"

3'-8"

3'-8"

3'-8"

3'-8"

3'-8"

3'-8"

3'-8"

3'-8"

3'-8"

3'-8"

3'-8"

3'-8"

3'-8"

3'-8"

3'-8"

3'-8"

3'-8"

3'-8"

3'-8"

3'-8"

3'-8"

3'-8"

3'-8"

3'-8"

3'-8"

3'-8"

3'-8"

3'-8"

3'-8"

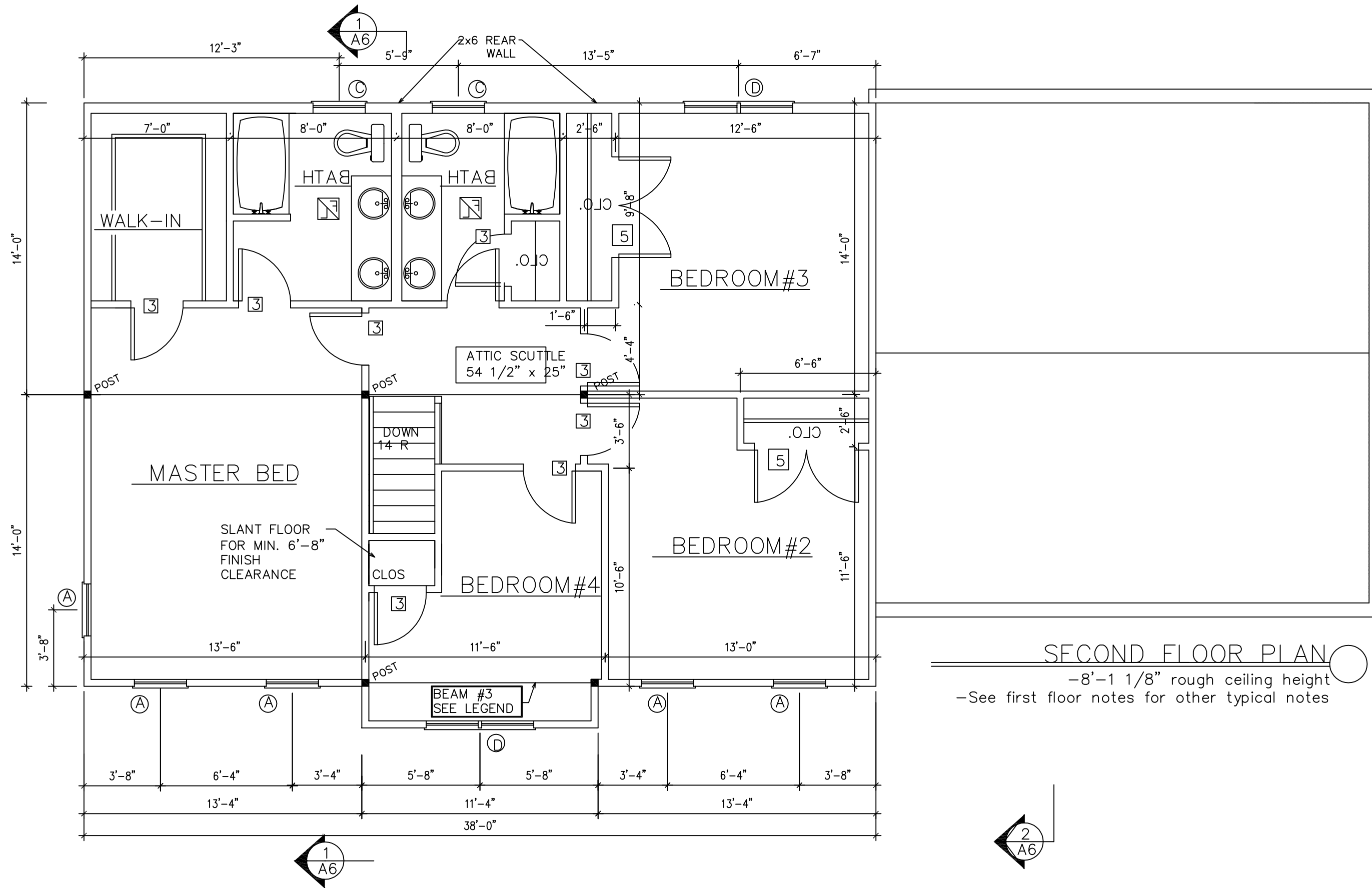
3'-8"

3'-8"

3'-8"

3'-8"

3'-8"



SECOND FLOOR PLAN
 -8'-1 1/8" rough ceiling height
 -See first floor notes for other typical notes